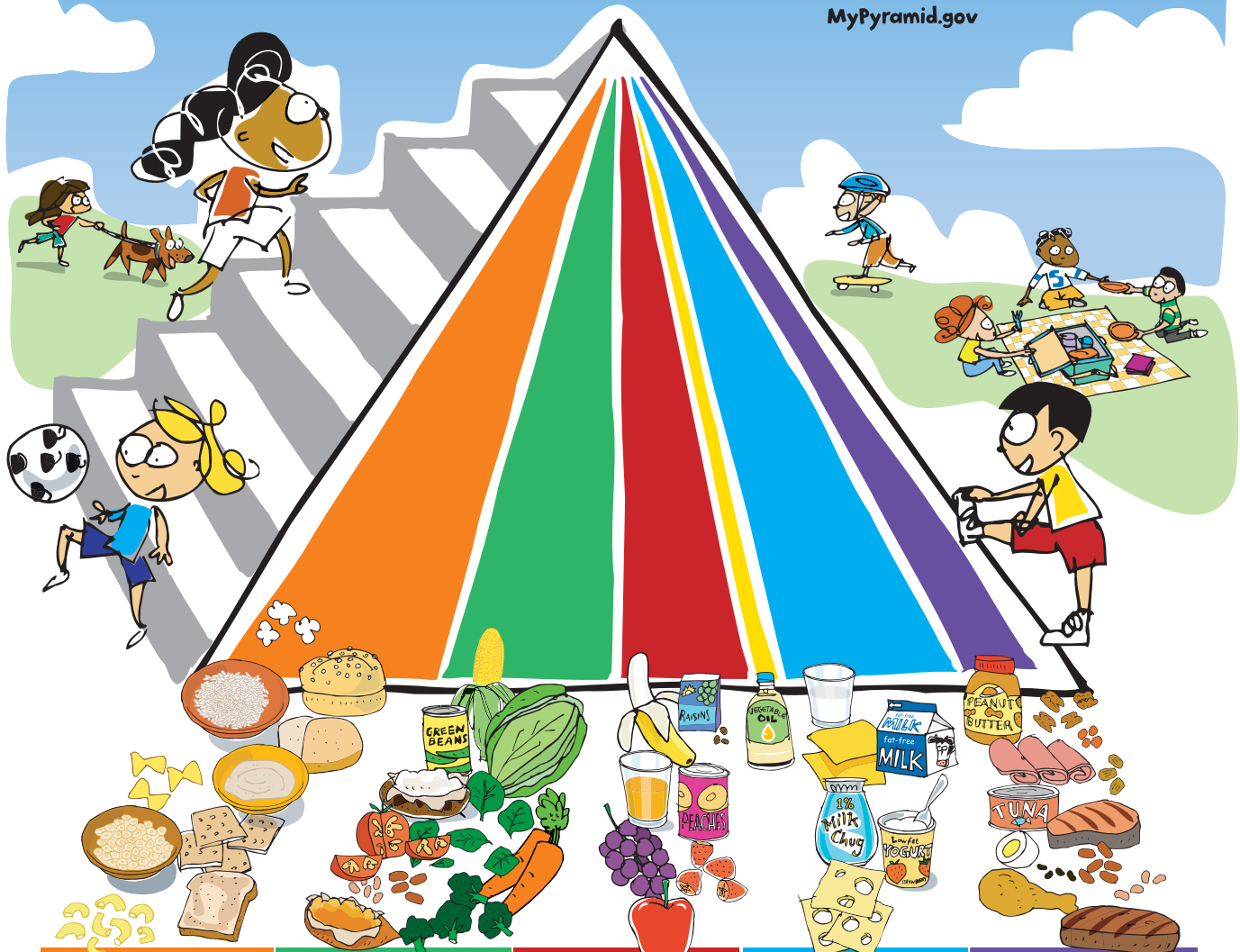


MyPyramid

For Kids

Eat Right. Exercise Have Fun.

MyPyramid.gov



Grains Make half your grains whole	Vegetables Vary your veggies	Fruits Focus on fruits	Milk Get your calcium-rich foods	Meat & Beans Go lean with protein
<p>Start smart with breakfast. Look for whole-grain cereals.</p> <p>Just because bread is brown doesn't mean it's whole-grain. Search the ingredients list to make sure the first word is "whole" (like "whole wheat").</p>	<p>Color your plate with all kinds of great-tasting veggies.</p> <p>What's green and orange and tastes good? Veggies! Go dark green with broccoli and spinach, or try orange ones like carrots and sweet potatoes.</p>	<p>Fruits are nature's treats – sweet and delicious.</p> <p>Go easy on juice and make sure it's 100%.</p>	<p>Move to the milk group to get your calcium. Calcium builds strong bones.</p> <p>Look at the carton or container to make sure your milk, yogurt, or cheese is lowfat or fat-free.</p>	<p>Eat lean or lowfat meat, chicken, turkey, and fish. Ask for it baked, broiled, or grilled – not fried.</p> <p>It's nutty, but true. Nuts, seeds, peas, and beans are all great sources of protein, too.</p>

For an 1,800-calorie diet, you need the amounts below from each food group. To find the amounts that are right for you, go to MyPyramid.gov.

Eat 6 oz. every day: at least half should be whole	Eat 2 1/2 cups every day	Eat 1 1/2 cups every day	Get 3 cups every day: for kids ages 2 to 8, it's 2 cups	Eat 5 oz. every day
--	---------------------------------	---------------------------------	---	----------------------------

Oils Oils are not a food group, but you need some for good health. Get your oils from fish, nuts, and liquid oils such as corn oil, soybean oil, and canola oil.

Find your balance between food and fun

- Move more. Aim for at least 60 minutes everyday, or most days.
- Walk, dance, bike, rollerblade – it all counts. How great is that!

Fats and sugars – know your limits

- Get your fat facts and sugar smarts from the Nutrition Facts label.
- Limit solid fats as well as foods that contain them.
- Choose food and beverages low in added sugars and other caloric sweeteners.



USDA is an equal opportunity provider and employer.